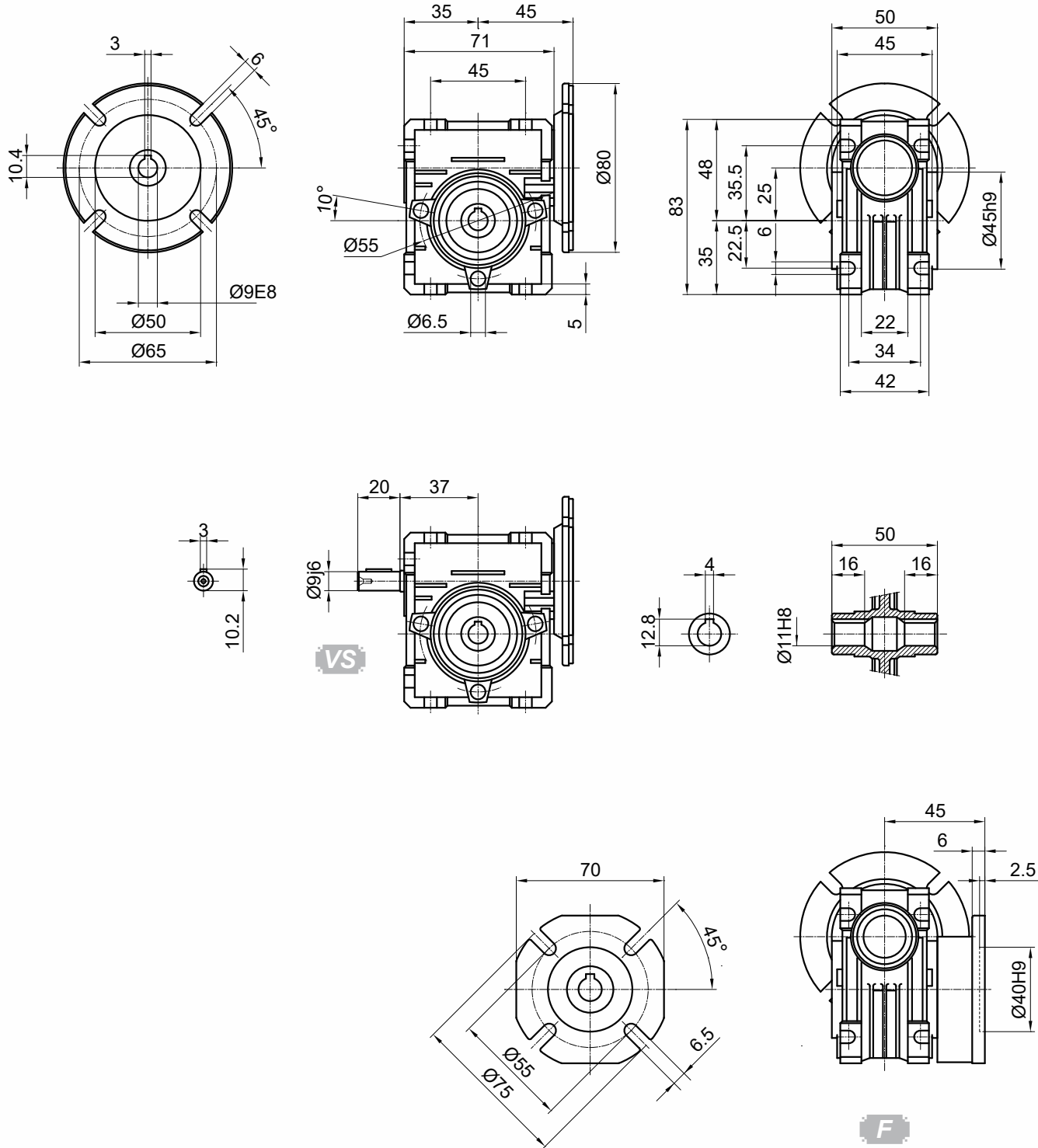


2.16. NMRV 도면

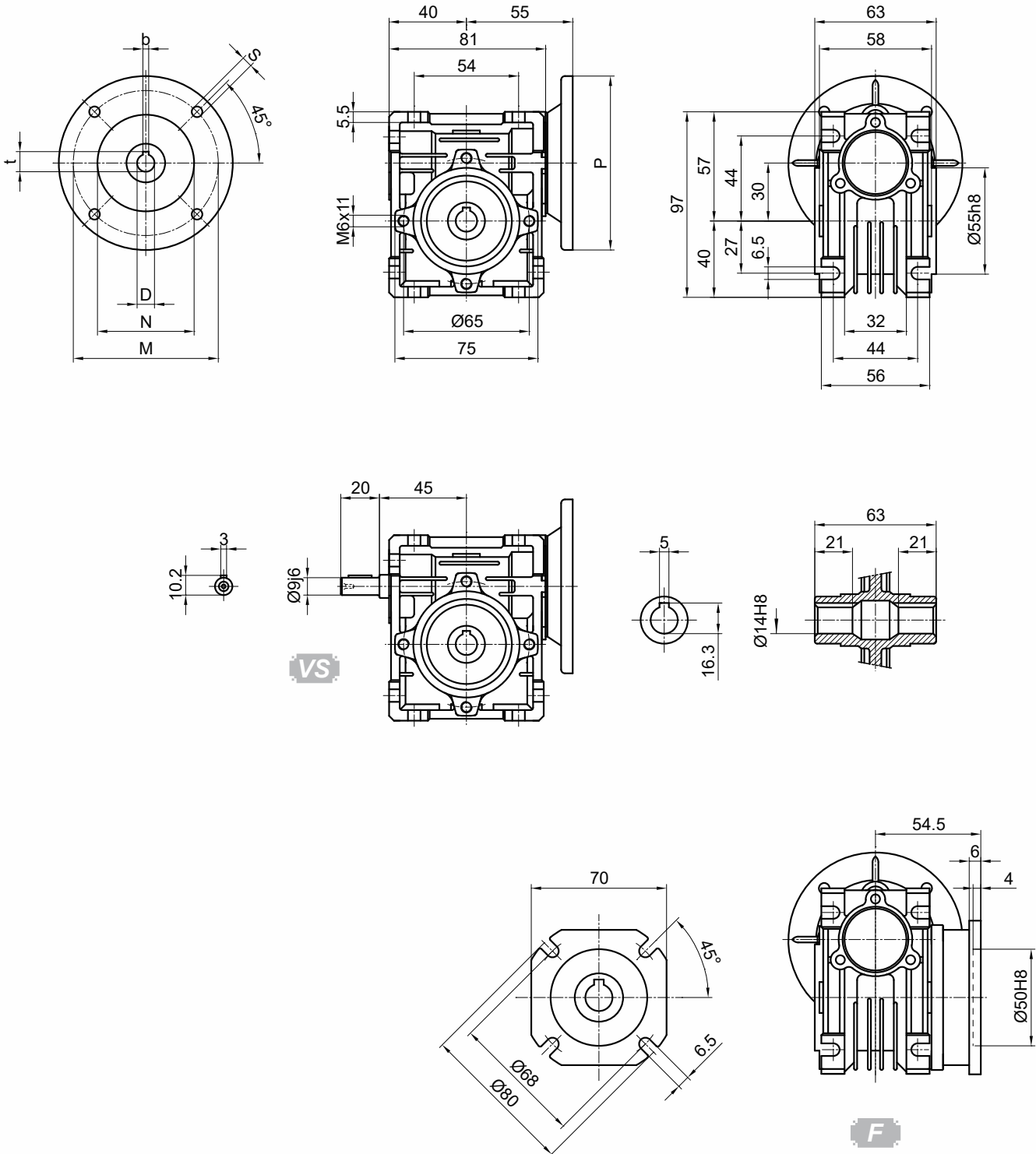
2.16. NMRV Dimensions charts

NMRV025



\*모터 제외 무게 0.7kg  
Weight without motor 0.7kg

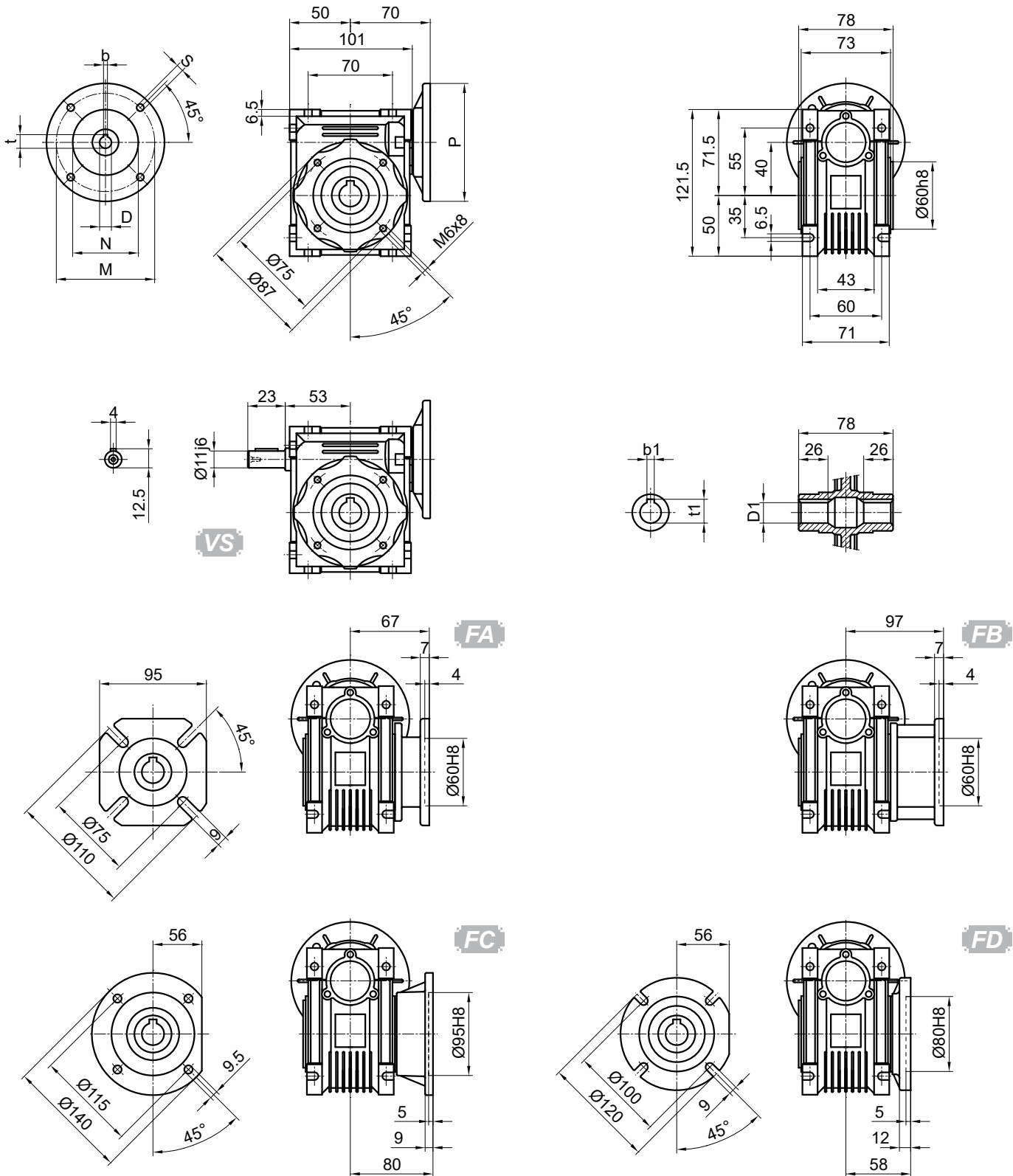
# NMRV030



PAM IEC	D <sub>ES</sub>	b	t	P	M	N	S
63B5	11	4	12.8	140	115	95	9
63B14	11	4	12.8	90	75	60	5.5
56B5	9	3	10.4	120	100	80	6.5
56B14	9	3	10.4	80	65	50	5.5

\*모터 제외 무게 1.2kg  
Weight without motor 1.2kg

# NMRV040

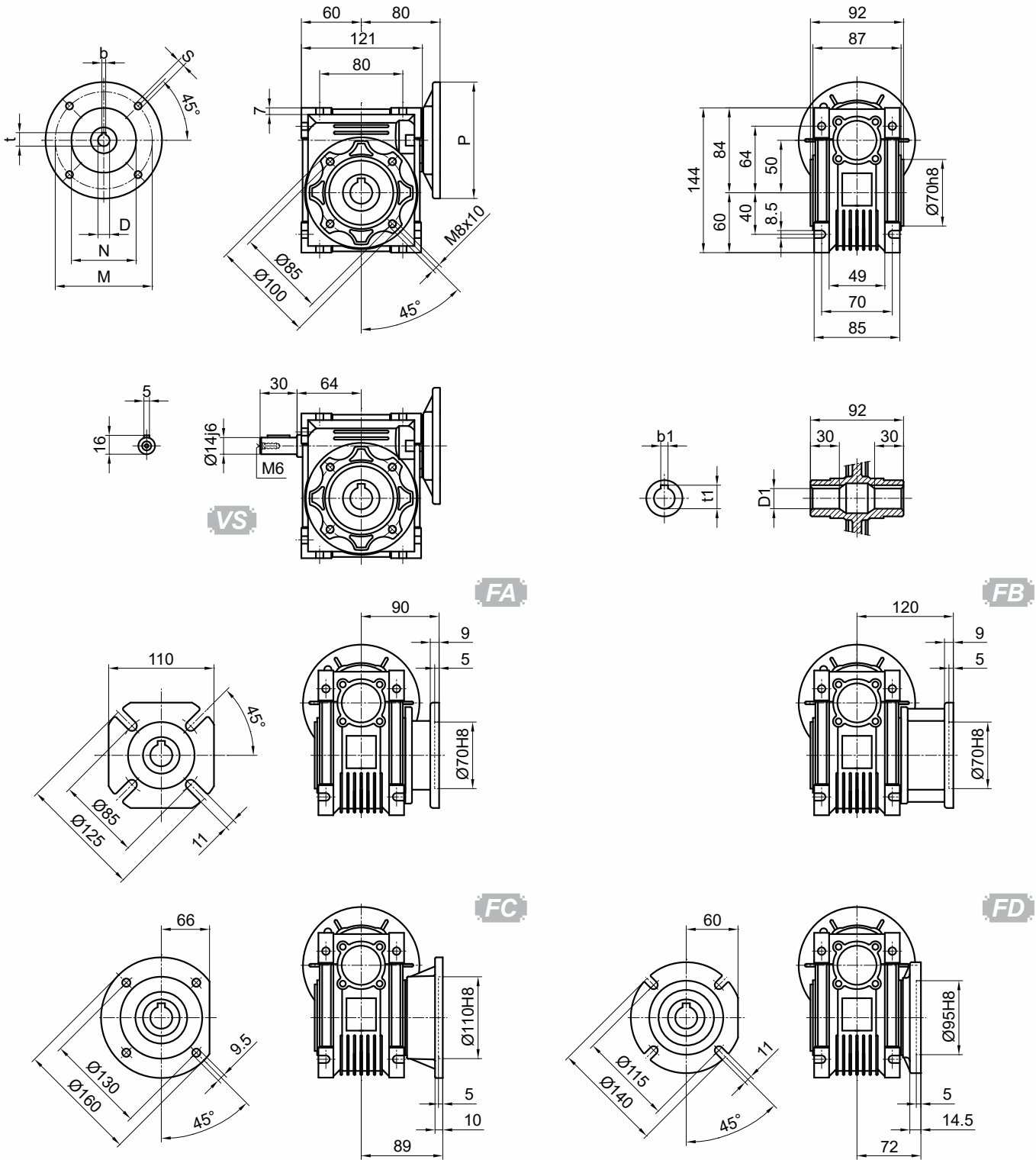


**NMRV**

PAM IEC	$D_{E8}$	$b$	$t$	$P$	$M$	$N$	$S$	출력 Output	$D1_{H8}$	$b1$	$t1$
71B5	14	5	16.3	160	130	110	8.5		18	6	20.8
71B14	14	5	16.3	105	85	70	6.5	(19)	(6)	(21.8)	
63B5	11	4	12.8	140	115	95	9	(..) 요청 시 (..) only on request			
63B14	11	4	12.8	90	75	60	6				
56B5	9	3	10.4	120	100	80	6.5				

\*모터 제외 무게 2.3kg  
Weight without motor 2.3kg

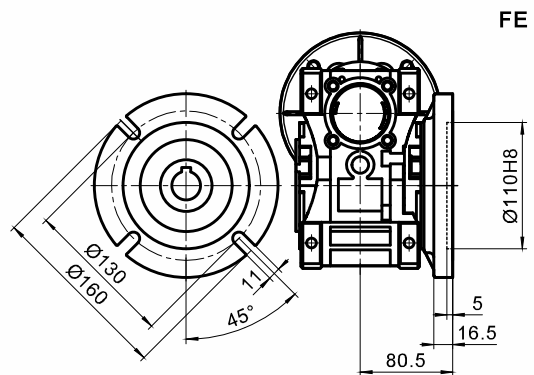
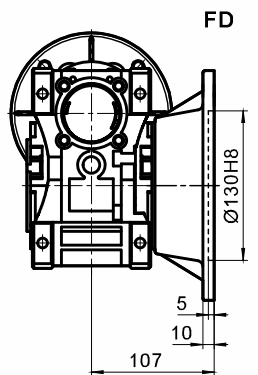
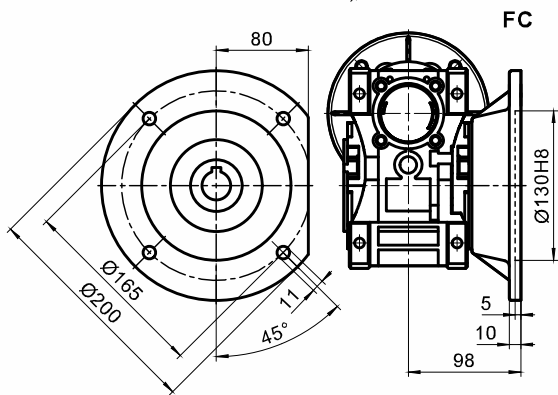
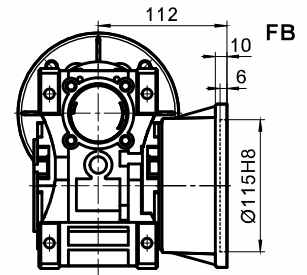
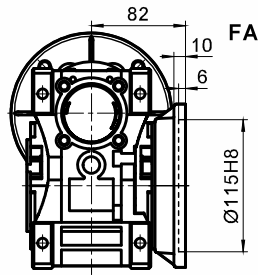
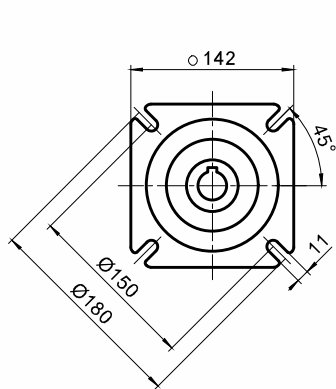
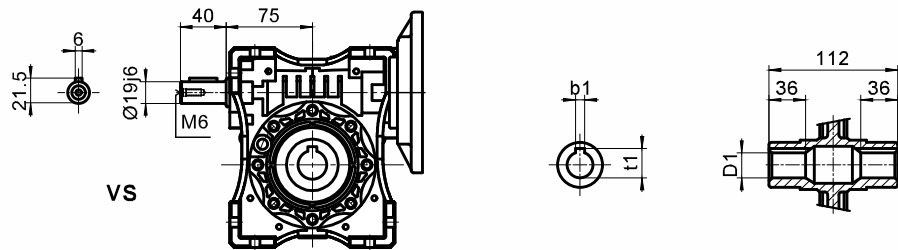
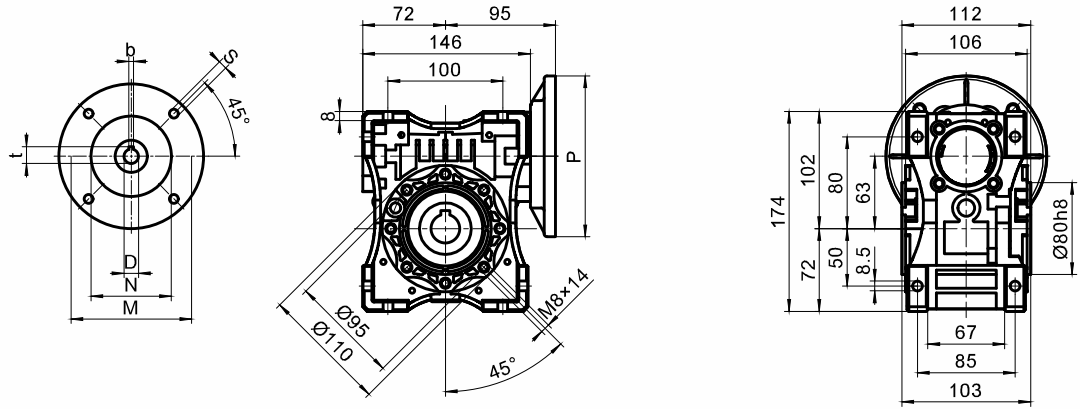
# NMRV050



PAM IEC	$D_{E8}$	$b$	$t$	$P$	$M$	$N$	$S$	출력 Output	$D1_{h8}$	$b1$	$t1$
80B5	19	6	21.8	200	165	130	11		25	8	28.3
80B14	19	6	21.8	120	100	80	6.5	(24)	(8)	(27.3)	
71B5	14	5	16.3	160	130	110	8.5	(..) 요청 시 (..) only on request			
71B14	14	5	16.3	105	85	70	7				
63B5	11	4	12.8	140	115	95	8.5				

\*모터 제외 무게 3.5kg  
Weight without motor 3.5kg

# TMRV063



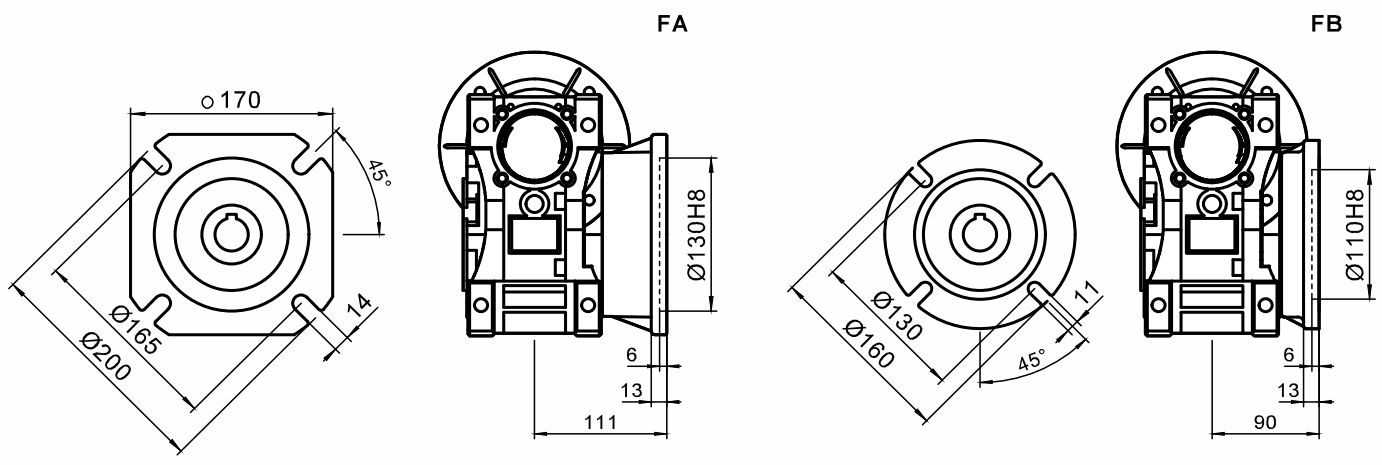
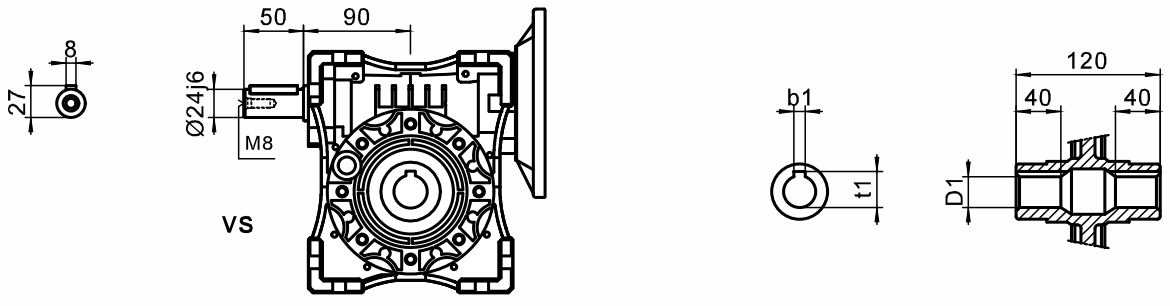
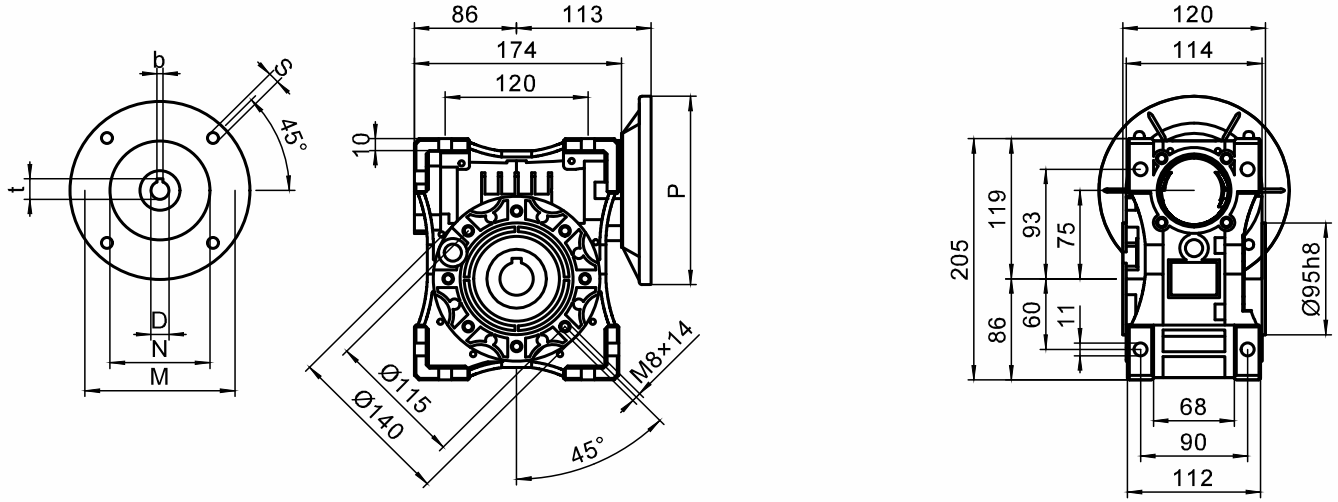
PAM IEC	D <sub>Es</sub>	b	t	P	M	N	S	출력 Output	D <sub>1h8</sub>	b <sub>1</sub>	t <sub>1</sub>
90B5	24	8	27.3	200	165	130	11		25	8	28.3
90B14	24	8	27.3	140	115	95	9	(28)	(8)	(31.3)	
80B5	19	6	21.8	200	165	130	11				
80B14	19	6	21.8	120	100	80	7				
71B5	14	5	16.3	160	130	110	8.5				
71B14	14	5	16.3	105	85	70	7				

(..) 요청 시  
(..) only on request

\*모터 제외 무게 6.2kg  
Weight without motor 6.2kg



# TMRV075

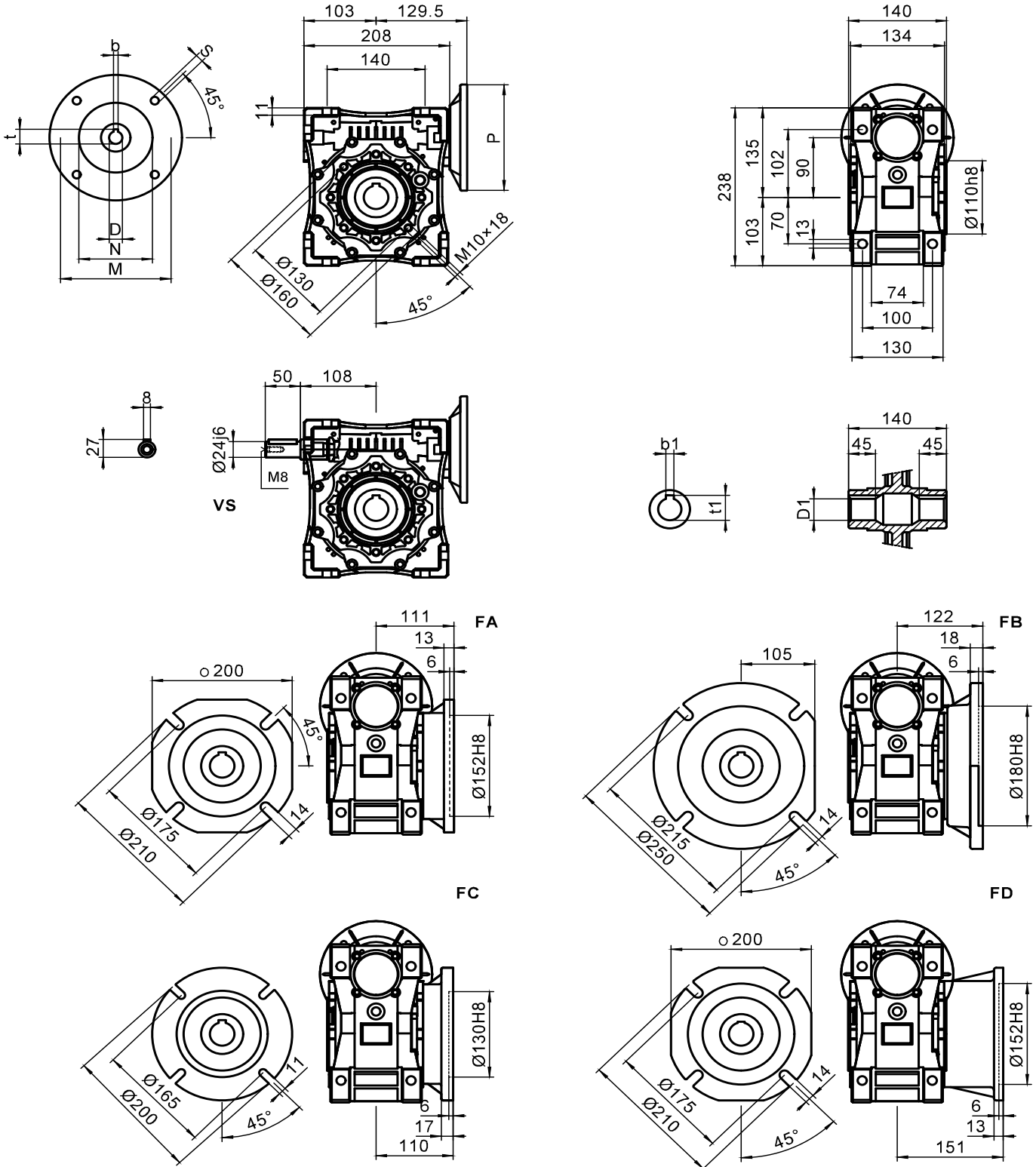


PAM IEC	D <sub>E8</sub>	b	t	P	M	N	S	출력 Output	D <sub>1h8</sub>	b <sub>1</sub>	t <sub>1</sub>
100/112B5	28	8	31.3	250	215	180	13			28	8
100/112B14	28	8	31.3	160	130	110	9	(35)		(10)	(38.3)
90B5	24	8	27.3	200	165	130	11				
90B14	24	8	27.3	140	115	95	9				
80B5	19	6	21.8	200	165	130	11				
80B14	19	6	21.8	120	100	80	6.5				
71B5	14	5	16.3	160	130	110	9	(..)			

(..) 요청 시  
(..) only on request

\* 모터 제외 무게 9.0kg  
Weight without motor 9.0kg

# TMRV090

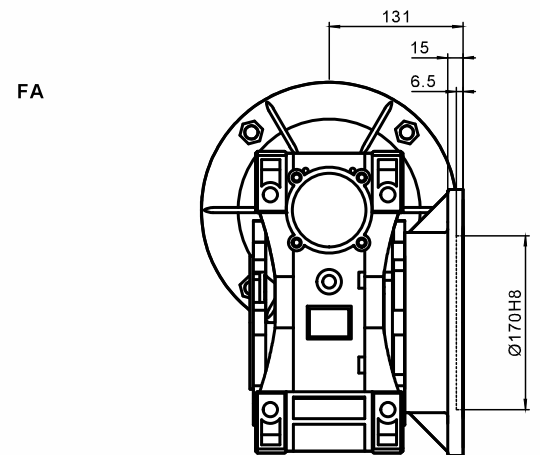
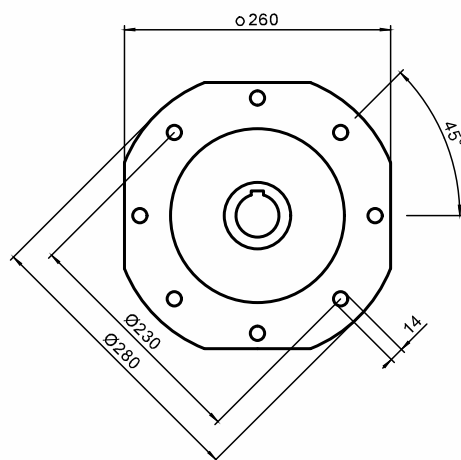
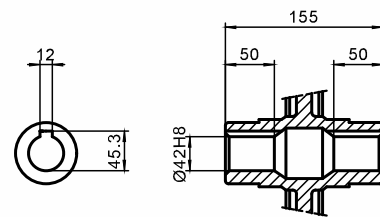
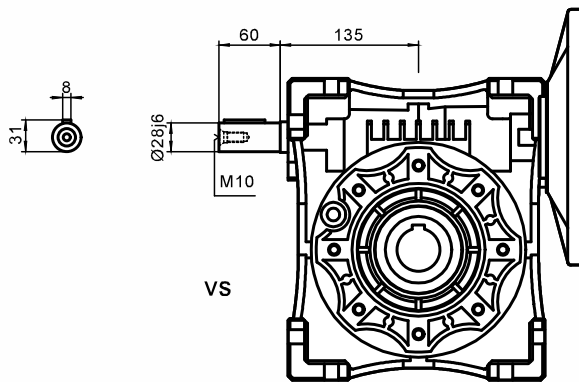
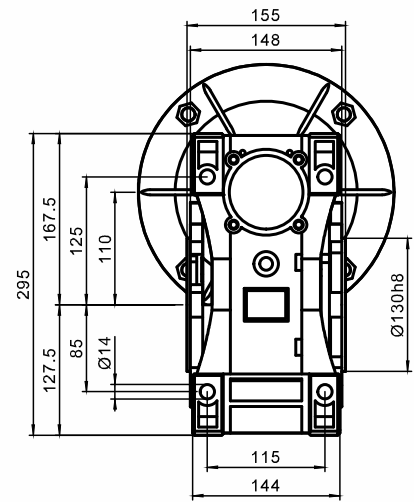
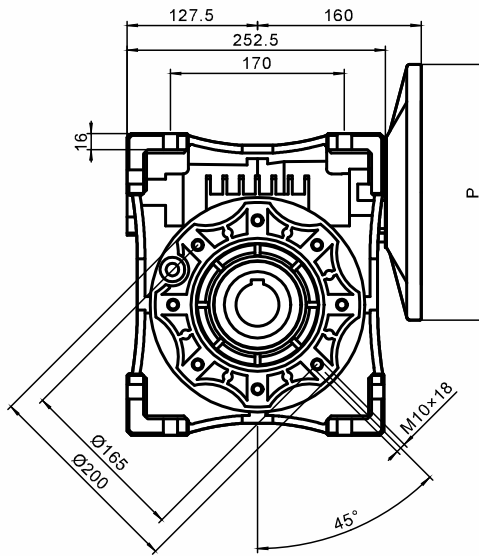
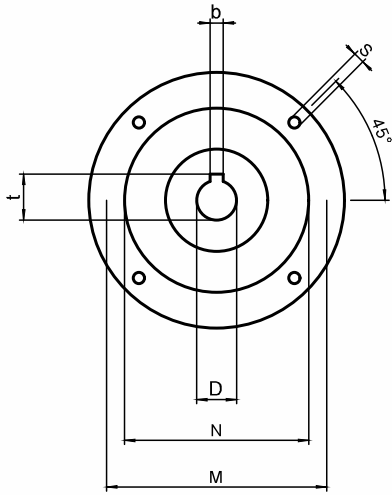


**TMRV**

PAM IEC	$D_{E8}$	b	t	P	M	N	S	출력 Output	$D1_{h8}$	b1	t1
100/112B5	28	8	31.3	250	215	180	13			35	10
100/112B14	28	8	31.3	160	130	110	9	(38)		(10)	(41.3)
90B5	24	8	27.3	200	165	130	11	(..) 요청 시 (..) only on request			
90B14	24	8	27.3	140	115	95	9				
80B5	19	6	21.8	200	165	130	11				
80B14	19	6	21.8	120	100	80	6.5				

\* 모터 제외 무게 13kg  
Weight without motor 13kg

# TMRV110 -Alu

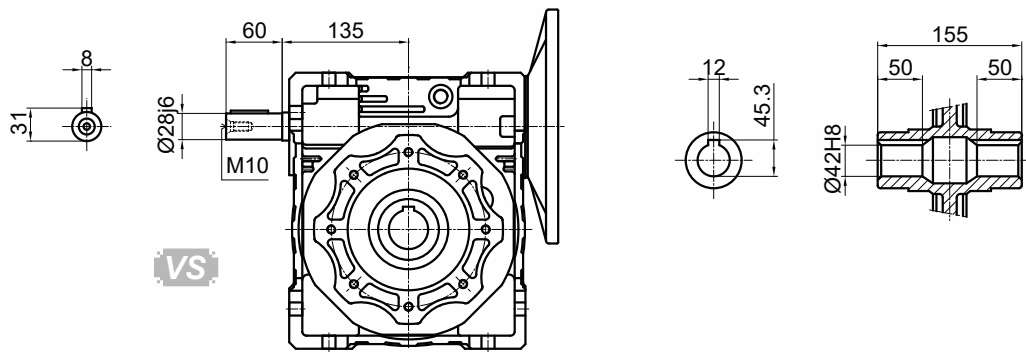
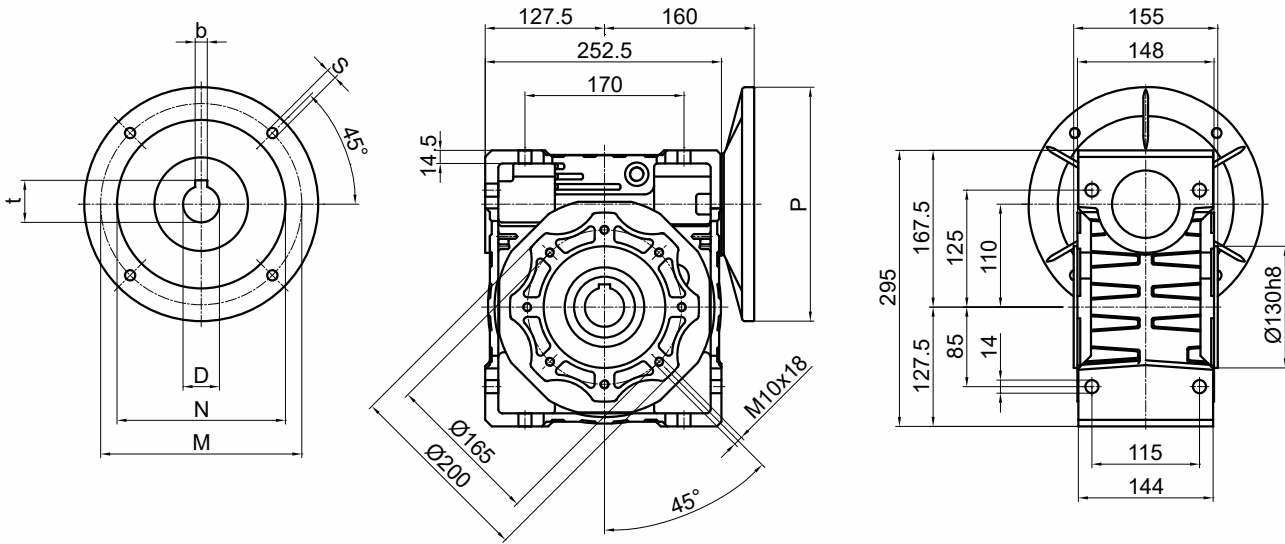


PAM IEC	D <sub>E8</sub>	b	t	P	M	N	S
132B5	38	10	41.3	300	265	230	M12
100/112B5	28	8	31.3	250	215	180	13
90B5	24	8	27.3	200	165	130	11
80B5	19	6	21.8	200	165	130	11

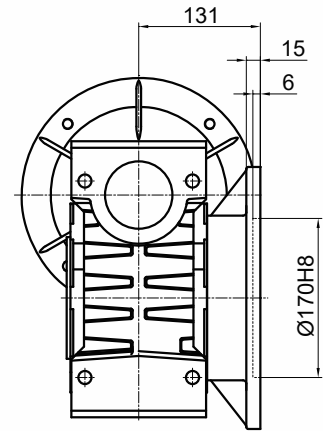
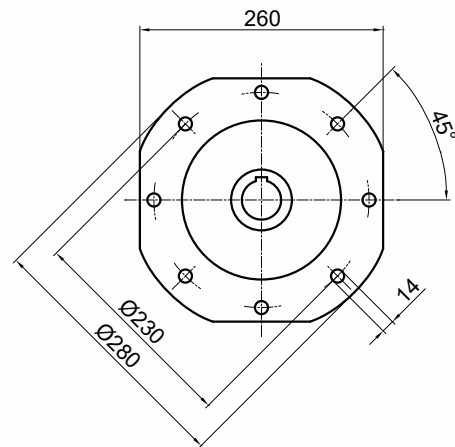
\* 모터 제외 무게 21kg  
Weight without motor 21kg



# NMRV110-Cast Iron



VS



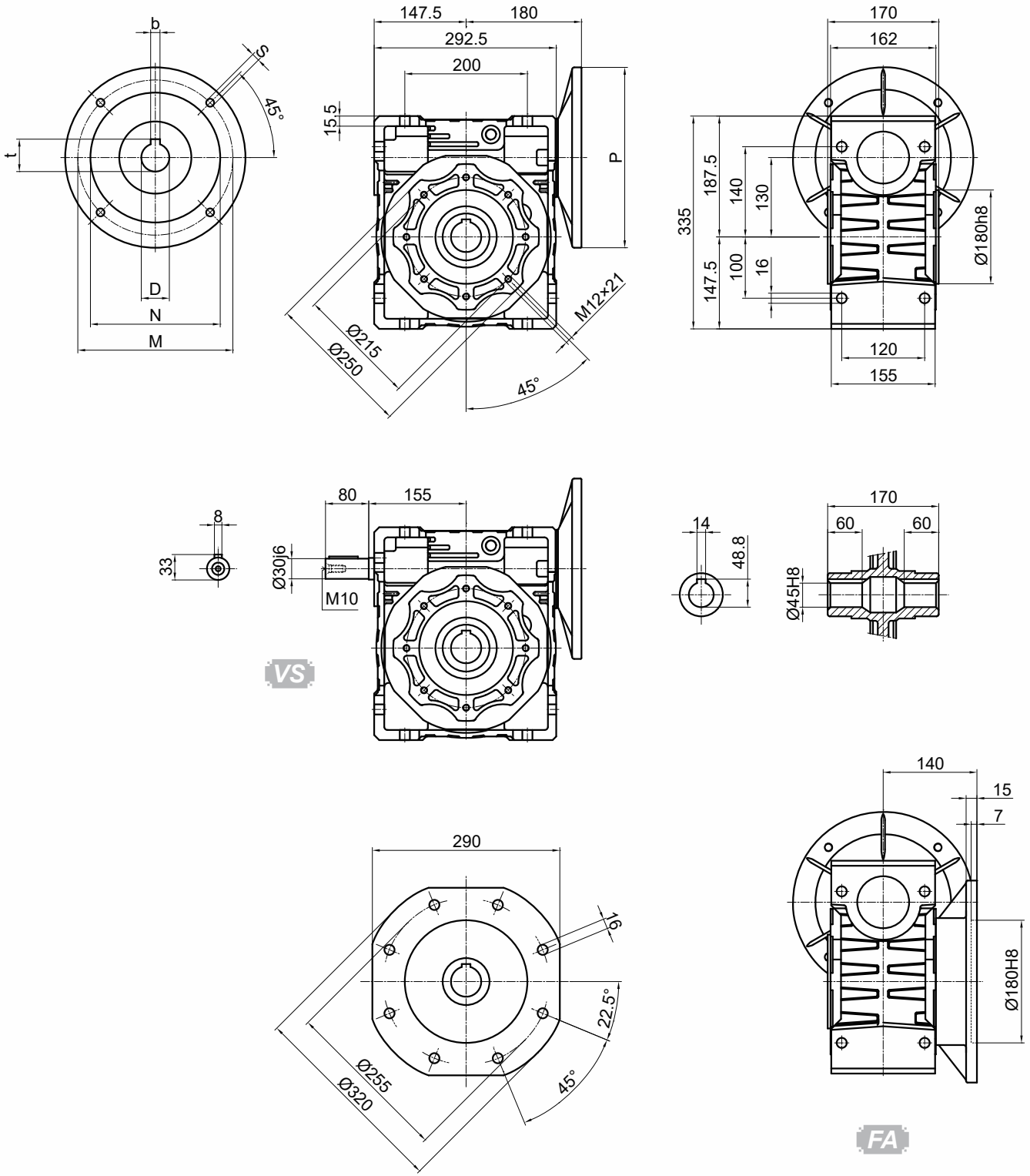
FA

PAM IEC	D <sub>E8</sub>	b	t	P	M	N	S
132B5	38	10	41.3	300	265	230	M12
100/112B5	28	8	31.3	250	215	180	13
90B5	24	8	27.3	200	165	130	11
80B5	19	6	21.8	200	165	130	11

\* 모터 제외 무게 35kg  
Weight without motor 35kg



# NMRV130



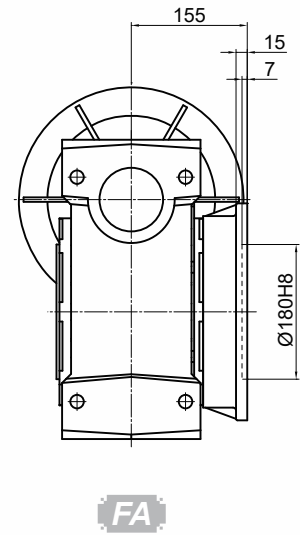
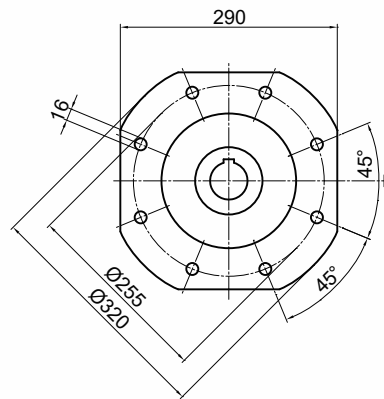
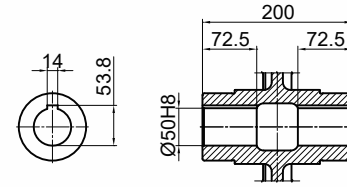
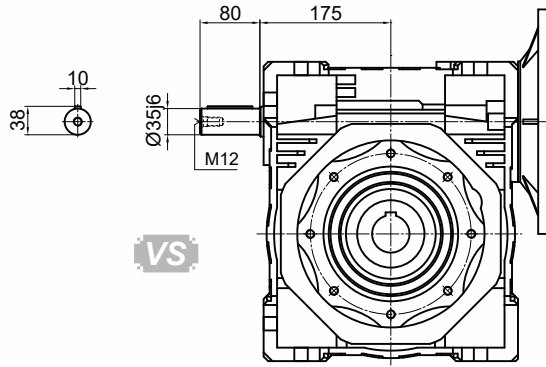
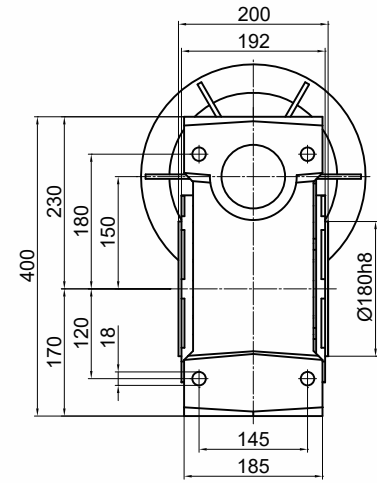
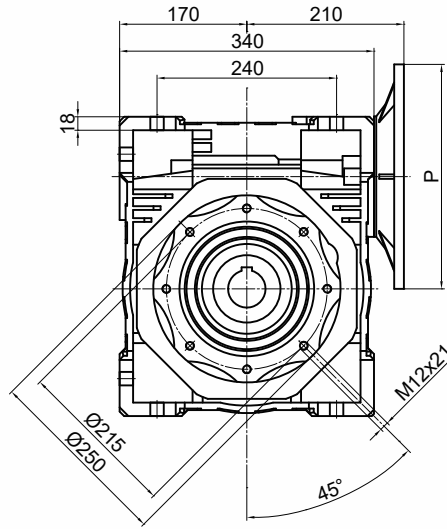
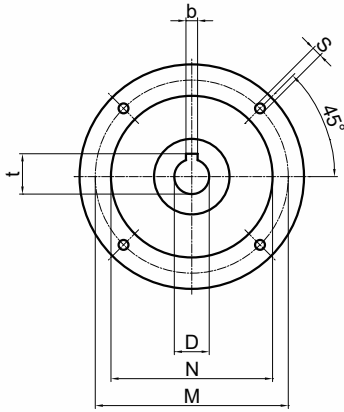
VS

FA

PAM IEC	$D_{E8}$	$b$	$t$	$P$	$M$	$N$	$S$
132B5	38	10	41.3	300	265	230	M12
100/112B5	28	8	31.3	250	215	180	13
90B5	24	8	27.3	200	165	130	11

\*모터 제외 무게 48kg  
Weight without motor 48kg

# NMRV150



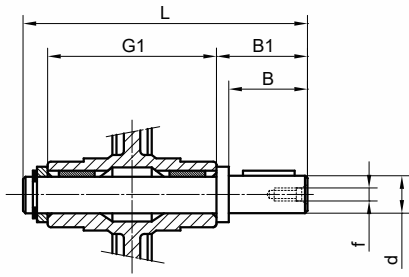
PAM IEC	D <sub>E8</sub>	b	t	P	M	N	S
160B5	42	12	45.3	350	300	250	19
132B5	38	10	41.3	300	265	230	M12
100/112B5	28	8	31.3	250	215	180	M12

\*모터 제외 무게 84kg  
Weight without motor 84kg

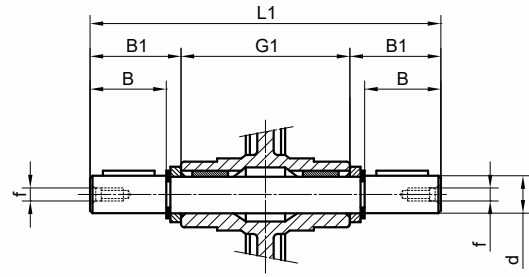
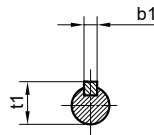
NMRV

## 2.22. 출력샤프트

## 2.22. Output shaft



AS



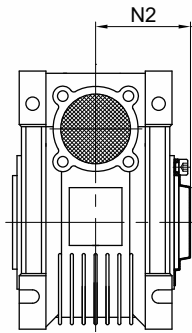
AB

	<b>d</b>	<b>B</b>	<b>B1</b>	<b>G1</b>	<b>L</b>	<b>L1</b>	<b>f</b>	<b>b1</b>	<b>t1</b>
<b>025</b>	11 g6 (9)	23 (25)	25.5 (30)	50	81 (85.5)	101	-	4 (3)	12.5 (10.2)
<b>030</b>	14 g6	30	32.5	63	102	128	M6	5	16
<b>040</b>	18 h6	40	43	78	128	164	M6	6	20.5
<b>050</b>	25 h6	50	53.5	92	153	199	M10	8	28
<b>063</b>	25 h6	50	53.5	112	173	219	M10	8	28
<b>075</b>	28 h6	60	63.5	120	192	247	M10	8	31
<b>090</b>	35 h6	80	84.5	140	234	309	M12	10	38
<b>105/110</b>	42 h6	80	84.5	155	249	324	M16	12	45
<b>130</b>	45 h6	80	85	170	265	340	M16	14	48.5
<b>150</b>	50 h6	82	87	200	297	374	M16	14	53.5

(..) 요청 시 가능  
(..) only on request

## 2.23. 보호커버

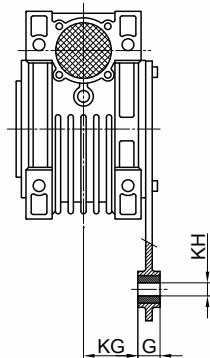
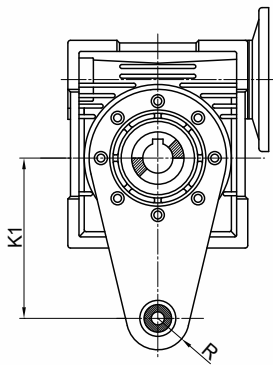
## 2.23. Protective Cover



	<b>N2</b>
<b>030</b>	42
<b>040</b>	50
<b>050</b>	58
<b>063</b>	69
<b>075</b>	74
<b>090</b>	86
<b>105/110</b>	94
<b>130</b>	102
<b>150</b>	113

## 2.24. 토크암

## 2.24. Torque arm



	<b>K1</b>	<b>G</b>	<b>KG</b>	<b>Kh</b>	<b>R</b>
<b>025</b>	70	14	17.5	8	15
<b>030</b>	85	14	24	8	15
<b>040</b>	100	14	31.5	10	18
<b>050</b>	100	14	38.5	10	18
<b>063</b>	150	14	49	10	18
<b>075</b>	200	25	47.5	20	30
<b>090</b>	200	25	57.5	20	30
<b>105/110</b>	250	30	62	25	35
<b>130</b>	250	30	69	25	35
<b>150</b>	250	30	84	25	35