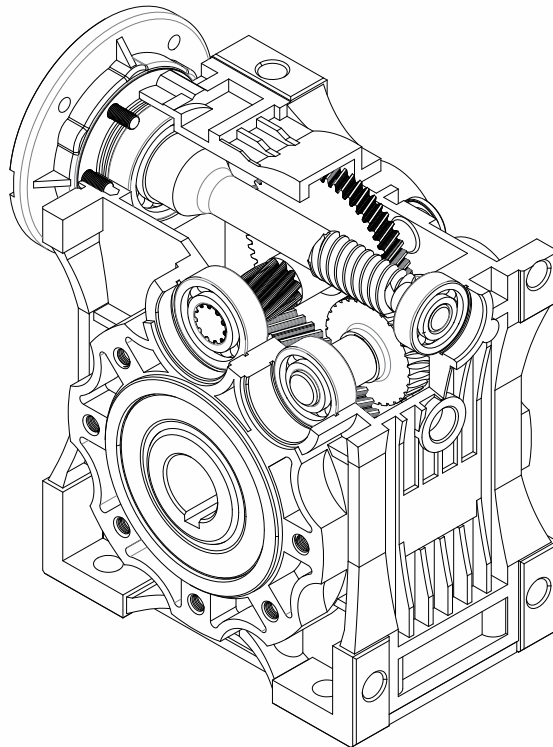




4. THW 워헬리컬 감속기

THW Series - Helical Worm Gear Unit



THW

4.1. THW

헬리컬 워름속기로서 사이즈 63-75-90-110 이 가능하며, 3단계의 기어 단계를 적용 합니다.

- 1 용 , 300
가능 합니다.
- NMRV 가 가
- NMRV 가
- NMRV 가
- NMRV 가
- NMRV 가
- NMRV 가
- NMRV 가
- NMRV 가
- NMRV 가

4.2. IEC PAM 입력 조합

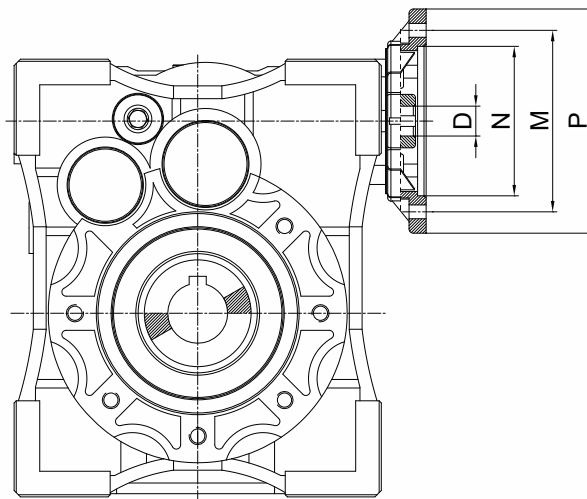
4.1. THW Features

Helical worm gearbox have four specifications : 63-75-90-110 ,Using third transmission

Features

- First stage use worm gear, transmission ratio can be a maximum of 300.
- Compared with PMRV series, it has larger transmission ratio, greater output torque and higher efficiency.
- External dimensions are almost identical to UX series .
- Installation make no difference to PMRV series.
- Relative to standard PT RV series reducer, hollow output shaft diameter is differentiated .
- You can use all accessories of PMRV series .

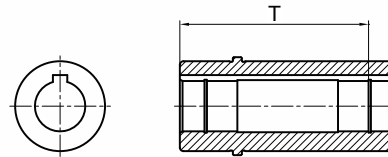
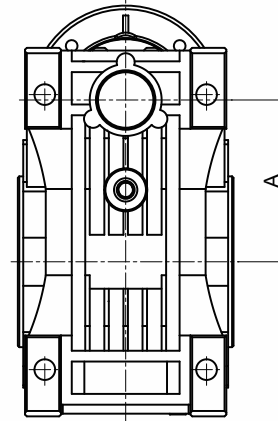
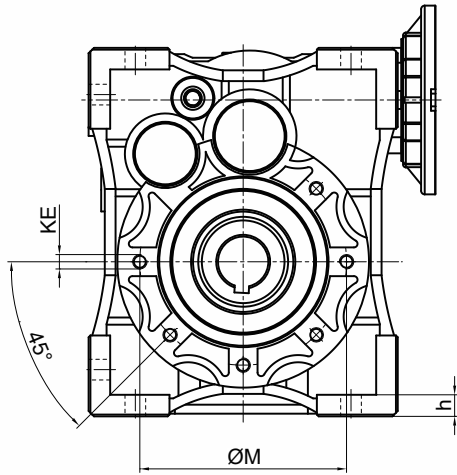
4.2. DISPOSITION AND COMBINATIONS



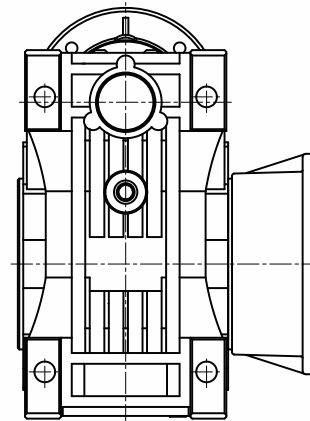
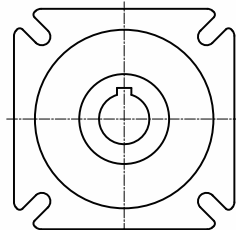
THW	PAM IEC	N	M	P	D						
					80	100	125	150	200	250	300
63	63B5	95	115	140	11	11	11	11	11	11	11
	63B14	60	75	90	9	9	9	9	9	9	
	56B5	80	100	120	14	14	14	14	14	-	
	56B14	50	65	80	11	11	11	11	11	11	
75	71B5	110	130	160	-	9	9	9	9	9	
	71B14	70	85	105	19	19	19	19	-	-	
	63B5	95	115	140	14	14	14	14	14	14	
	63B14	60	75	90	11	11	11	11	11	11	
	56B5	80	100	120	24	24	24	-	-	-	
90	80B5	130	165	200	19	19	19	19	19	19	
	80B14	80	100	120	14	14	14	14	14	14	
	71B5	110	130	160	11	11	11	11	11	11	
	71B14	70	85	105	19	19	19	19	19	19	
	63B5	95	115	140	14	14	14	14	14	14	
110	90B5	130	165	200	24	24	24	-	-	-	
	90B14	95	115	140	19	19	19	19	19	19	
	80B5	130	165	200	14	14	14	14	14	14	
	80B14	80	100	120	19	19	19	19	19	19	
	71B5	110	130	160	14	14	14	14	14	14	
	71B14	70	85	105	14	14	14	14	14	14	

4.3. THW 시리즈 도면

4.3. THW series dimensions charts



FA FB FC FD FE



	63	75	90	110
A	75.5	90	101	128.5
M	95	115	130	165
KE	M8 x 14 [n=6]	M8 x 14 [n=6]	M10 x 18 [n=6]	M10 x 18 [n=6]
h	10	12	13	16
T	97	105	122	131

누락 된 치수는 NMRV 시리즈 샘플을 참조하십시오.

For the missing dimensions refer to NMRV series sample.



4.4 THW 성능표

4.4 THW Performance

Type			63 [200Nm]																				
i 명목 / Nomina			80			100			125			150			200			250			300		
i 실제 / Actual			79.87			101.26			122.42			150.25			204.68			244.46			298.7		
n ₁ [min ⁻¹]	P ₁ [kW]	motor	n ₂ [min ⁻¹]	M ₂ [Nm]	f.s.	n ₂ [min ⁻¹]	M ₂ [Nm]	f.s.	n ₂ [min ⁻¹]	M ₂ [Nm]	f.s.	n ₂ [min ⁻¹]	M ₂ [Nm]	f.s.	n ₂ [min ⁻¹]	M ₂ [Nm]	f.s.	n ₂ [min ⁻¹]	M ₂ [Nm]	f.s.	n ₂ [min ⁻¹]	M ₂ [Nm]	f.s.
2800	0.18	631-2	35.1	40	1.5	27.7	51	1.4	22.9	61	1.3	18.6	75	1.2	13.7	103	1.1	11.5	123	1.1	9.4	150	1
	0.25	632-2	35.1	56	1.3	27.7	70	1.2	22.9	85	1.2	18.6	105	1.1	13.7	142	1	11.5	170	1	9.4	208	0.9
1400	0.06	561-4										9.3	50	1.5	6.8	68	1.4	5.7	82	1.3	4.7	100	1.25
	0.09	562-4	17.5	40	1.5	13.8	51	1.4	11.4	61	1.4	9.3	75	1.3	6.8	103	1.2	5.7	123	1.15	4.4	150	1.1
	0.12	631-4	17.5	53	1.4	13.8	68	1.3	11.4	82	1.3	9.3	100	1.2	6.8	137	1.1	5.7	163	1	4.7	200	1
	0.18	632-4	17.5	80	1.2	13.8	101	1.15	11.4	123	1.1	9.3	151	1	6.8	205	0.9	5.7	245	0.9			

Type			75 [299Nm]																				
i 명목 / Nomina			80			100			125			150			200			250			300		
i 실제 / Actual			79.87			101.26			122.42			150.25			204.68			244.46			298.7		
n ₁ [min ⁻¹]	P ₁ [kW]	motor	n ₂ [min ⁻¹]	M ₂ [Nm]	f.s.	n ₂ [min ⁻¹]	M ₂ [Nm]	f.s.	n ₂ [min ⁻¹]	M ₂ [Nm]	f.s.	n ₂ [min ⁻¹]	M ₂ [Nm]	f.s.	n ₂ [min ⁻¹]	M ₂ [Nm]	f.s.	n ₂ [min ⁻¹]	M ₂ [Nm]	f.s.	n ₂ [min ⁻¹]	M ₂ [Nm]	f.s.
2800	0.18	631-2	35.1	40	1.6	27.7	51	1.5	22.9	61	1.45	18.6	75	1.4	13.7	103	1.3	11.5	123	1.2	9.4	150	1.2
	0.25	632-2	35.1	56	1.5	27.7	70	1.4	22.9	85	1.3	18.6	105	1.2	13.7	142	1.1	11.5	170	1.1	9.4	208	1
	0.37	711-2	35.1	82	1.3	27.7	104	1.2	22.9	126	1.15	18.6	155	1.1	13.7	211	1	11.5	252	0.9	9.4	308	0.9
	0.55	712-2	35.1	122	1.1	27.7	155	1.1	22.9	187	1												
1400	0.09	562-4				13.8	51	1.6	11.4	61	1.5	9.3	75	1.5	6.8	103	1.4	5.7	123	1.3	4.4	150	1.2
	0.12	631-4	17.5	53	1.6	13.8	68	1.5	11.4	82	1.4	9.3	100	1.3	6.8	137	1.2	5.7	163	1.2	4.7	200	1.1
	0.18	632-4	17.5	80	1.4	13.8	101	1.3	11.4	123	1.2	9.3	151	1.2	6.8	205	1.1	5.7	245	1	4.7	299	1
	0.25	711-4	17.5	111	1.2	13.8	141	1.1	11.4	170	1.1	9.3	209	1	6.8	285	0.95	5.7	340	0.9			
	0.37	712-4	17.5	165	1.1	13.8	209	1	11.4	252	0.9	9.3	310	0.9									
900	0.18	711-6	11.3	125	1.2	8.9	158	1.1	7.4	191	1.1	6.0	234	1	4.4	319	0.9	3.7	381	0.85			
	0.25	712-6	11.3	173	1.1	8.9	219	1	7.4	265	0.95	6.0	325	0.9									

Type			90 [416Nm]																				
i 명목 / Nomina			80			100			125			150			200			250			300		
i 실제 / Actual			79.87			101.26			122.42			150.25			204.68			244.46			298.7		
n ₁ [min ⁻¹]	P ₁ [kW]	motor	n ₂ [min ⁻¹]	M ₂ [Nm]	f.s.	n ₂ [min ⁻¹]	M ₂ [Nm]	f.s.	n ₂ [min ⁻¹]	M ₂ [Nm]	f.s.	n ₂ [min ⁻¹]	M ₂ [Nm]	f.s.	n ₂ [min ⁻¹]	M ₂ [Nm]	f.s.	n ₂ [min ⁻¹]	M ₂ [Nm]	f.s.	n ₂ [min ⁻¹]	M ₂ [Nm]	f.s.
2800	0.18	631-2													13.7	103	1.5	11.5	123	1.45	9.4	150	1.4
	0.25	632-2							22.9	85	1.6	18.6	105	1.5	13.7	142	1.4	11.5	170	1.3	9.4	208	1.2
	0.37	711-2	35.1	82	1.5	27.7	104	1.4	22.9	126	1.4	18.6	155	1.3	13.7	211	1.2	11.5	252	1.1	9.4	308	1.05
	0.55	712-2	35.1	122	1.3	27.7	155	1.3	22.9	187	1.2	18.6	230	1.1	13.7	313	1	11.5	374	0.95	9.4	457	0.9
	0.75	801-2	35.1	167	1.2	27.7	211	1.1	22.9	256	1.05	18.6	314	1	13.7	427	0.9						
	1.1	802-2	35.1	245	1.1	27.7	310	1	22.9	375	0.9												
1400	0.12	631-4							11.4	82	1.65	9.3	100	1.6	6.8	137	1.5	5.7	163	1.4	4.7	200	1.3
	0.18	632-4	17.5	80	1.6	13.8	101	1.5	11.4	123	1.45	9.3	151	1.4	6.8	205	1.3	5.7	245	1.2	4.7	299	1.1
	0.25	711-4	17.5	111	1.5	13.8	141	1.4	11.4	170	1.3	9.3	209	1.2	6.8	285	1.1	5.7	340	1.05	4.7	416	1
	0.37	712-4	17.5	165	1.3	13.8	209	1.2	11.4	252	1.1	9.3	310	1.05	6.8	422	0.9	5.7	504	0.9			
	0.55	801-4	17.5	245	1.1	13.8	310	1	11.4	375	0.95	9.3	460	0.9									
900	0.75	802-4	17.5	334	1	13.8	423	0.9															
	0.18	711-6	11.3	125	1.5	8.9	158	1.4	7.4	191	1.3	6.0	234	1.2	4.4	319	1.1	3.7	381	1	3.0	466	0.95
	0.25	712-6	11.3	173	1.3	8.9	219	1.2	7.4	265	1.1	6.0	325	1	4.4	443	0.95	3.7	529	0.9			
	0.37	801-6	11.3	256	1.1	8.9	325	1	7.4	392	0.95	6.0	482	0.9									
0.55	802-6	11.3	381	1	8.9	482	0.9																

THW 성능표

THW Performance

Type			110 [915Nm]																							
i 명목 / Nomina			80			100			125			150			200			250			300					
i 실제 / Actual			79.87			101.26			122.42			150.25			204.68			244.46			298.7					
n ₁ [min ⁻¹]	P ₁ [kW]	motor	n ₂ [min ⁻¹]	M ₂ [Nm]	f.s.	n ₂ [min ⁻¹]	M ₂ [Nm]	f.s.	n ₂ [min ⁻¹]	M ₂ [Nm]	f.s.	n ₂ [min ⁻¹]	M ₂ [Nm]	f.s.	n ₂ [min ⁻¹]	M ₂ [Nm]	f.s.	n ₂ [min ⁻¹]	M ₂ [Nm]	f.s.	n ₂ [min ⁻¹]	M ₂ [Nm]	f.s.			
2800	0.37	711-2										18.6	155	1.6	13.7	211	1.5	11.5	252	1.4	9.4	308	1.35			
	0.55	712-2				27.7	155	1.6	22.9	187	1.5	18.6	230	1.4	13.7	313	1.3	11.5	374	1.25	9.4	457	1.2			
	0.75	801-2	35.1	167	1.5	27.7	211	1.4	22.9	256	1.4	18.6	314	1.3	13.7	427	1.2	11.5	510	1.1	9.4	624	1			
	1.1	802-2	35.1	245	1.3	27.7	310	1.2	22.9	375	1.2	18.6	460	1.1	1.7	627	1	11.5	749	0.9	9.4	915	0.85			
	1.5	90S-2	35.1	334	1.2	27.7	423	1.1	22.9	511	1.05	18.6	628	1												
	2.2	90L-2	35.1	489	1	27.7	620	1	22.9	750	0.9															
1400	0.25	711-4										9.3	209	1.6	6.8	285	1.4	5.7	340	1.4	4.7	416	1.3			
	0.37	712-4	17.5	165	1.6	13.8	209	1.5	11.4	252	1.4	9.3	310	1.4	6.8	422	1.2	5.7	504	1.2	4.7	615	1.1			
	0.55	801-4	17.5	245	1.4	13.8	310	1.3	11.4	375	1.2	9.3	460	1.2	6.8	627	1.1	5.7	749	1	4.7	915	1			
	0.75	802-4	17.5	334	1.3	13.8	423	1.2	11.4	511	1.1	9.3	628	1	6.8	855	0.9	5.7	1021	0.9						
	1.1	90S-4	17.5	489	1.1	13.8	620	1	11.4	750	0.9															
	1.5	90L-4	17.5	667	1																					
900	0.18	711-6							7.4	191	1.6	6.0	234	1.6	4.4	319	1.4	3.7	381	1.35	3.0	466	1.3			
	0.25	712-6	11.3	173	1.6	8.9	219	1.6	7.4	265	1.5	6.0	325	1.4	4.4	443	1.3	3.7	529	1.2	3.0	647	1.1			
	0.37	801-6	11.3	256	1.4	8.9	325	1.4	7.4	392	1.3	6.0	482	1.2	4.4	656	1.1	3.7	784	1	3.0	957	0.9			
	0.55	802-6	11.3	381	1.2	8.9	482	1.2	7.4	583	1.1	6.0	716	1	4.4	975	0.9									
	0.75	90S-6	11.3	519	1.1	8.9	658	1	7.4	795	0.95															
	1.1	90L-6	11.3	761	0.9																					

